

# Recycling Guidelines

## ✓ Best Items to Place in Your Recycling Cart

Please be advised that if your recyclables are placed in a plastic bag, they will be disposed of as trash. All recyclables should be placed in the cart loose.

**Paper** Place loose in cart. Use clear plastic bags for shredded paper *ONLY*.



Newspaper, Office Paper, Paper Bags, Junk Mail, Paperboard & Magazines

**Bottles & Jars**



Clear Bottles & Jars

**Cardboard**



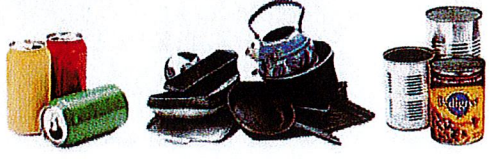
**Cardboard & Pizza Boxes**  
Flatten cardboard. Remove wax paper from pizza boxes

**Plastic**



**Jugs & Bottles with Small Top Openings**

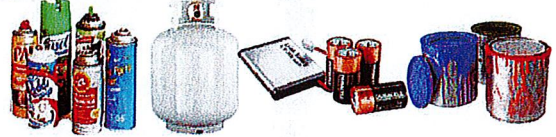
**Metal**



Aluminum Cans, Metal Cookware, Steel & Tin Cans

## ✗ Unacceptable Items in Your Recycling Cart

**Unacceptable Metal**



Aerosol Cans, Propane Tanks, Batteries & Paint Cans

**Electronic Waste**

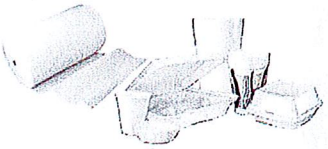


Electronics, Cords & Christmas Lights

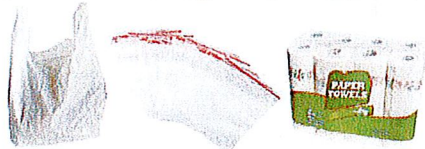
**Clothing**



**Styrofoam**



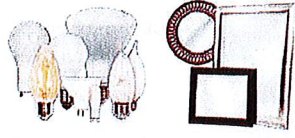
**Plastic Bags & Film**



**Coated Fiber Products**



**Unacceptable Glass**



Light Bulbs & Plate Glass/Mirrors

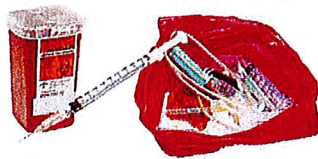
**Wood Items**



**Yard Waste**



**Medical Waste/Syringes**



### As well as...

- |                   |                    |                           |
|-------------------|--------------------|---------------------------|
| Diapers           | Dishes or Ceramics | Chemicals (Dry or Liquid) |
| Hardcover Books   | Household Cleaners | Pool Liners/Tarps/Covers  |
| Concrete          | Chains/Strapping   | Inflatable Pools          |
| Flammable Liquids | Garden Hoses       | Items with Gasoline       |

Like us on Facebook for Recycling Tips & Info  
facebook.com/ModernDisposal

ModernCorporation.com/FAQS  
800-330-7107

