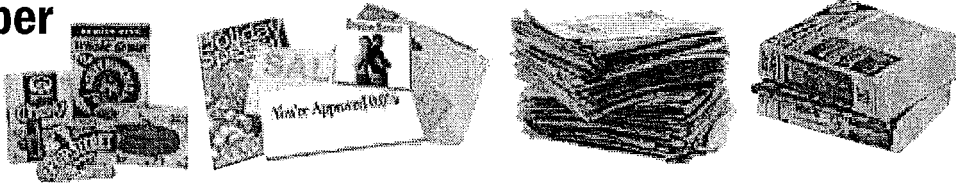


What Can I Recycle?

No Sorting Necessary

Paper



Paperboard

Office Paper & Junk Mail

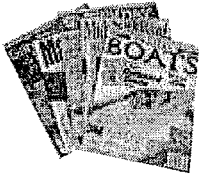
Newspaper

Phone Books

Envelopes, Flyers, Brochures, Postcards, etc.

Remove bags, strings & rubber bands

All types & sizes



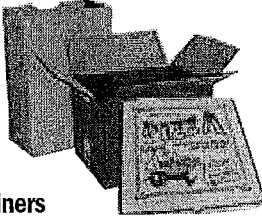
Magazines & Catalogs

All types & sizes



Food & Beverage Containers

Empty containers only



Cardboard, Pizza Boxes & Paper Bags

Flatten cardboard & cut into pieces. Remove wax paper from pizza boxes

Unacceptable Items



No
Plastic Bags,
Plastic Film or
Plastic Wrap

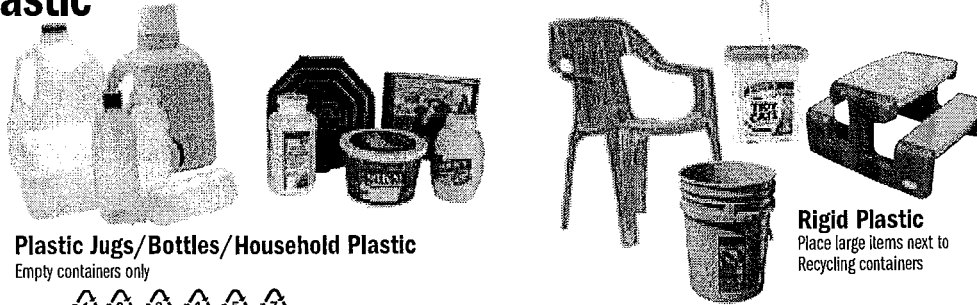


No
Yard Waste
or Wood



No
Aerosol Cans
or Chemicals
Safety Hazard

Plastic



Plastic Jugs/Bottles/Household Plastic

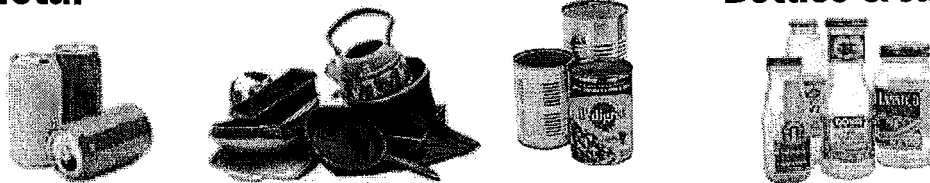
Empty containers only



Rigid Plastic

Place large items next to
Recycling containers

Metal



Aluminum Cans

Empty cans only

Kitchen Cookware

Metal pots, pans, tins & utensils

Steel & Tin Cans

Empty cans only

Bottles & Jars

Empty & Clear Bottles & Jars Only

No

- Batteries
- Blow Up Pools
- Chemicals (dry or liquid)
- Clothing or Rags
- Concrete
- Dishes or Ceramics
- Electrical Cords
- Electronics
- Flammable Liquids
- Garbage or Trash
- Garden Hoses
- Items with Gasoline (Lawn Equipment)
- Grass
- Household Cleaners
- Light Bulbs
- Medical Waste/Syringes
- Paint Cans
- Plastic Bags
- Plastic Film or Plastic Wrap
- Plate Glass or Mirrors
- Pool Liners/Tarps/Covers
- Propane Tanks
- Styrofoam
- Containers/Packing
- Wood Items
- Yard Waste

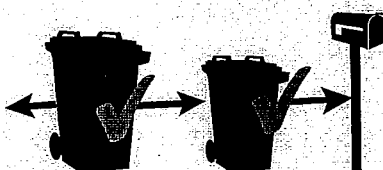
Please Follow These Guidelines Carefully

Cardboard must be broken down and if needed put next to your cart at no more than 4' pieces.

Please Help

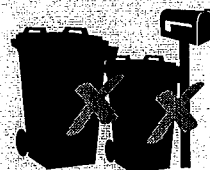
Leave space around your carts and other objects to improve collection efficiency and help us serve you better.

Good Cart Placement



Keep Space Between Cart & Other Objects

Poor Cart Placement



Objects & Carts Too Close Together



Place Wheels of Carts Toward House

Like us on Facebook for Recycling Tips & Info
facebook.com/ModernDisposal

ModernCorporation.com/FAQS

800-330-7107

Make a Difference,
Recycle

MODERN
Disposal Services